

Wireless at IPFW

Windows Vista Edition

To access the IPFW wireless network, you must configure Windows which allows authentication to the network with your IPFW username and password.

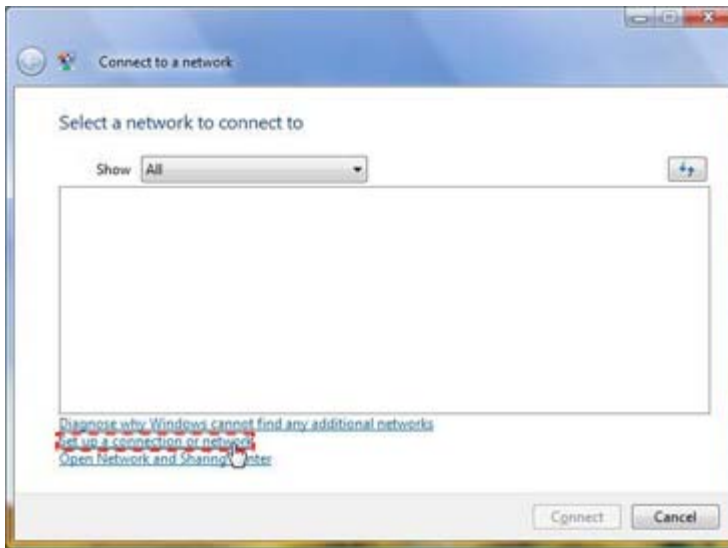
Before following these instructions, please ensure that all Windows updates and the most recent wireless driver are installed from the manufacturer website.

You may be prompted during the configuration process to choose whether the new connection is to be a **Home**, **Work**, or **Public** location. This setting controls the security for the wireless connection and it is recommended that you select **Public** location for maximum security.

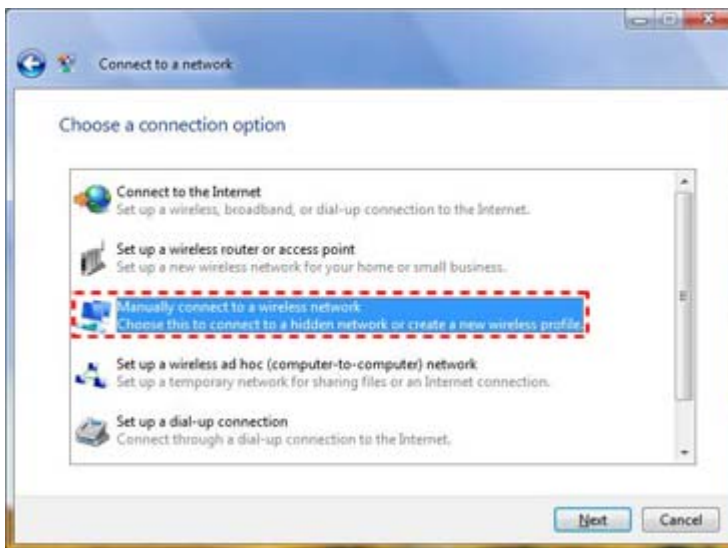
1. Choose **Connect To** from the Start Menu.



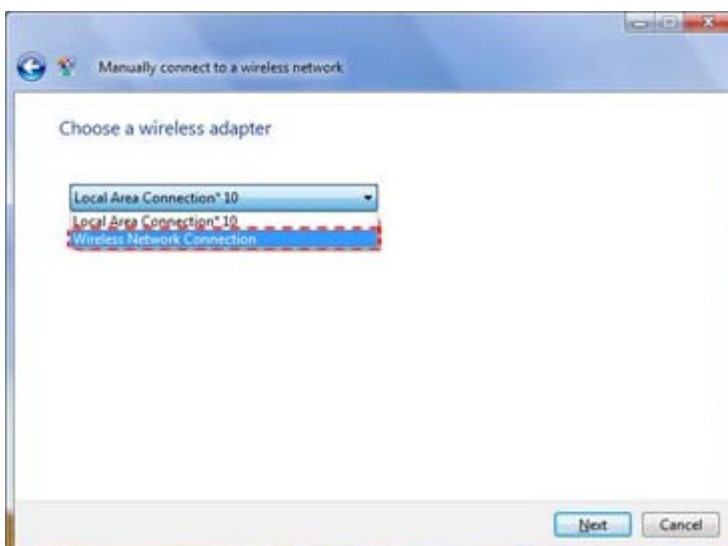
2. Click the **Set up a connection or network link**.



3. Choose the **Manually connect to a wireless network** option and click **Next**.

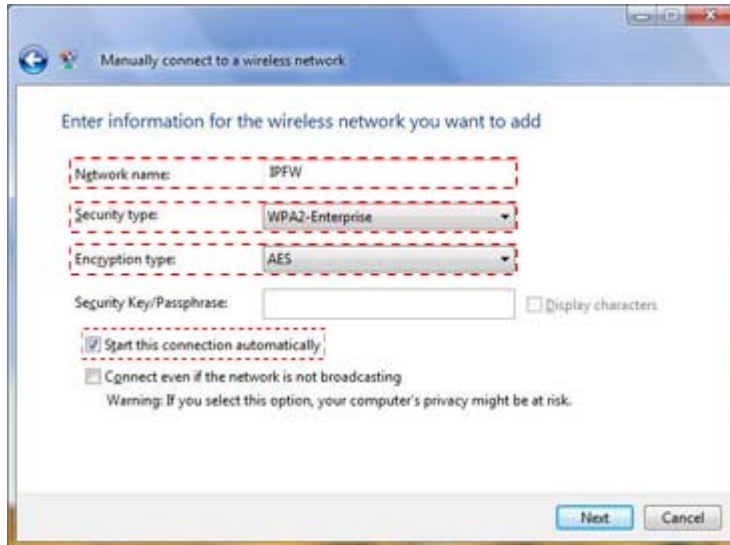


4. Select the appropriate wireless adapter from the drop-down and click **Next**.



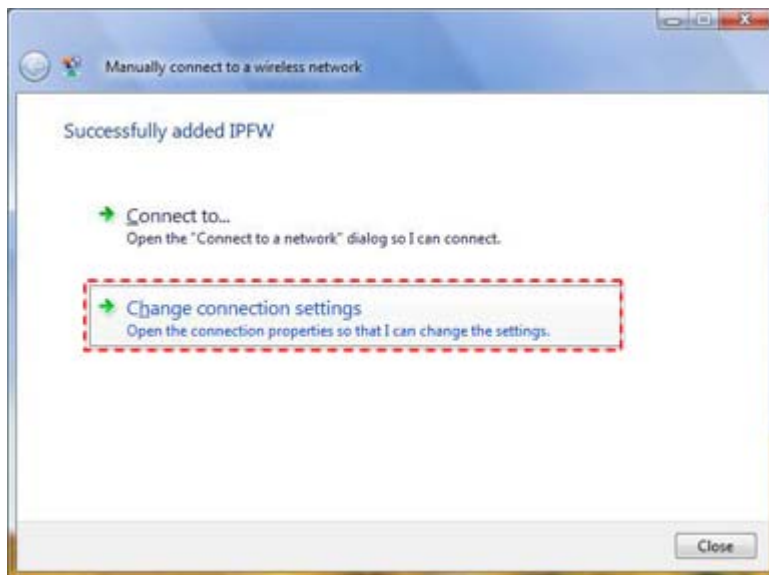
5. Enter **IPFW** in the **Network name:** text box.
Choose **WPA2-Enterprise** from the **Security type:** drop-down.

Ensure **AES** is selected from the **Encryption type**: drop-down.
Place a check next to **Start this connection automatically**.
Click **Next**.



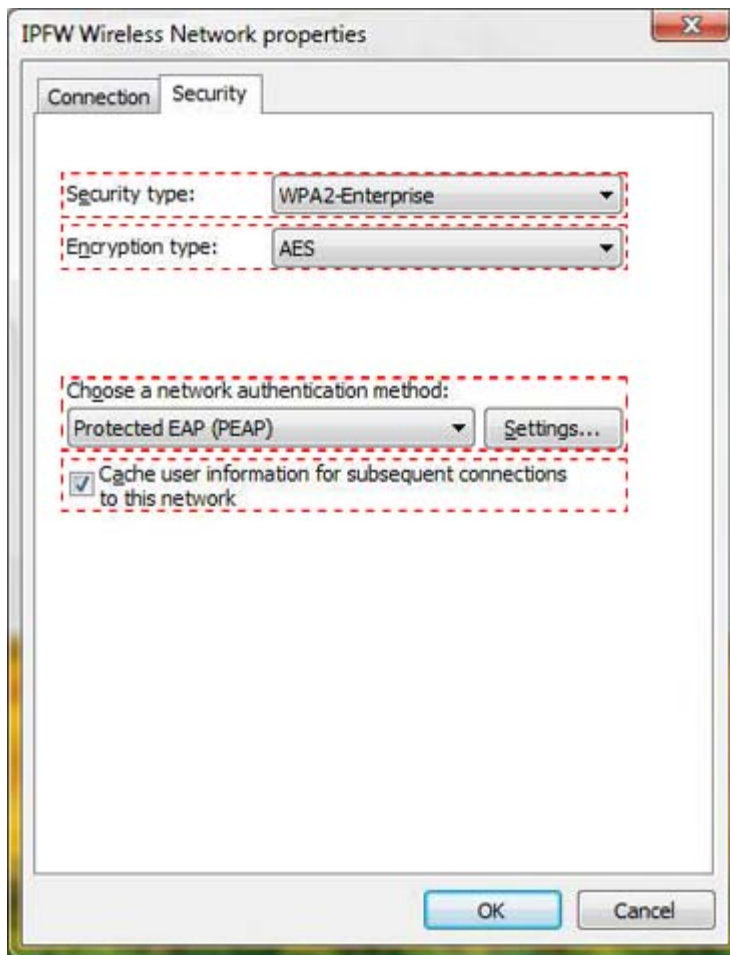
- o **Note:** Placing a check next to **Start this connection automatically** will force Windows to automatically open a connection when the system is in range of an access point.

6. Click **Change connection settings**.



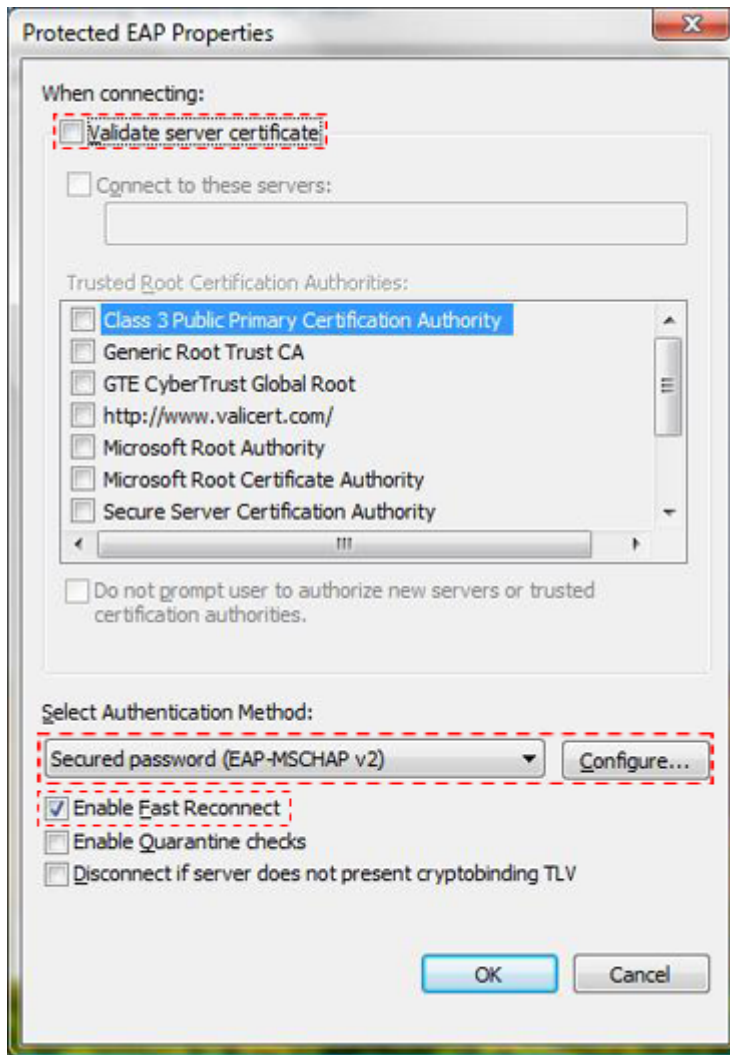
7. Choose the **Security** tab in the **Wireless Network Properties** window.

Ensure **Protected EAP (PEAP)** is selected from the **Choose a network authentication method** drop-down.



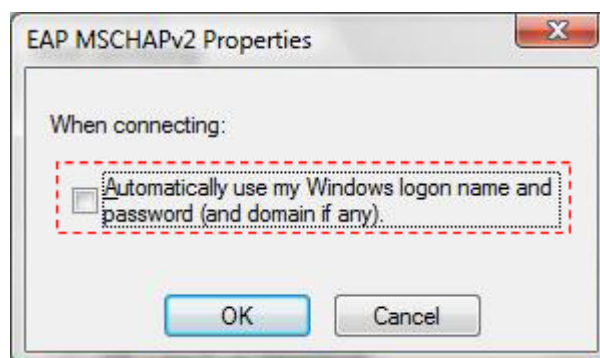
- **Note:** For convenience, the username and password entered may be saved for future connections to the network by placing a check next to Cache user information for subsequent connections to this network.

8. Click the **Settings...** button of the **Security** tab.
Uncheck **Validate server certificate**.
Ensure **Secured password (EAP-MSCHAP v2)** is selected from the **Select Authentication Method:** drop-down.

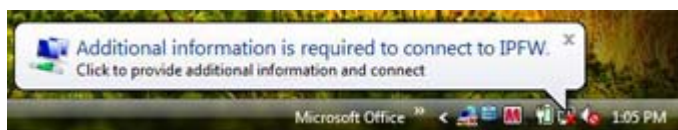


- Click the Configure... button in the Protected EAP Properties window.

Uncheck Automatically use my Windows logon name and password (and domain if any).



- Click OK in the EAP MSCHAPv2 Properties window.
Click OK in the Protected EAP Properties window.
Click OK in the Wireless Network properties window.
- Click the Additional information is required to connect to IPFW. balloon.



- **Note:** This balloon will only appear when the system is in range of an access point and will also appear if the password entered has expired or has been changed.

12. Enter your IPFW username and password in the **Enter Credentials** window.

Click OK in the **Enter Credentials** window.



Configuration of the wireless network is complete!

You should now be connected to the IPFW wireless network.

From this point forward, whenever an IPFW access point is in range, the system will automatically open a connection.

Once a successful connection has been completed, the connection status may be quickly viewed by hovering over the **network icon** in the system tray.



URL: <http://www.its.ipfw.edu/wireless/vista-config.shtml>
Updated: July 8, 2008